

**KOLDTECH**

The Technology of Excellence

# A - SERIES

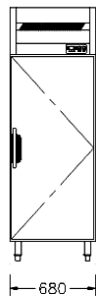
Upright / Reach-in units  
Refrigerator • Freezer



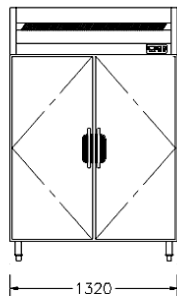
Picture shown model AR-40-4D

# A - SERIES

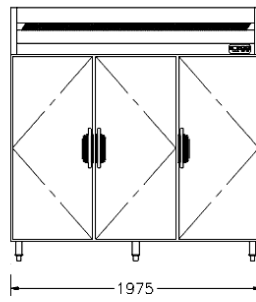
## Upright / Reach-in units refrigerator • freezer



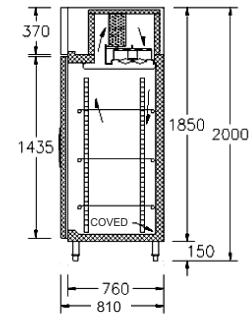
AR-18-ID  
AF-18-ID



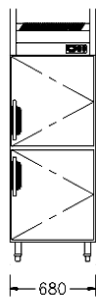
AR-40-2D  
AF-40-2D



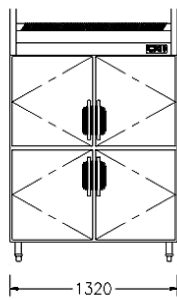
AR-60-3D  
AF-60-3D



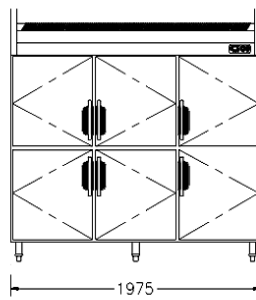
CROSS SECTION



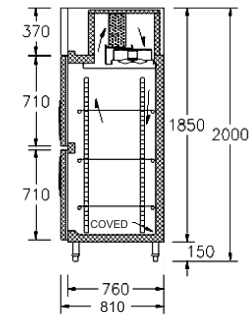
AR-18-2D  
AF-18-2D



AR-40-4D  
AF-40-4D



AR-60-6D  
AF-60-6D



CROSS SECTION

### STANDARD FEATURES

Insulation	Polyurethane Foamed-in-place thickness 60 mm. and 40 mm. for door panels. (for 1 compartment model sides panels are 50 mm.)	
Finish	<ul style="list-style-type: none"> <li>S/S 430 #4F</li> <li>S/S 304 #2B</li> </ul>	<ul style="list-style-type: none"> <li>Door 22 ga. S/S 304 #4F</li> <li>Zincalume steel top, base and back</li> </ul>
Door	Choices of full door or half door stainless steel or full door or half door double pane heat reflective insulated glass. Self closing door with easily replaceable magnetic gasket. Mullion heater standard for freezer units but option for refrigerator.	
Glass door model	Double pane glass door, with 3mm heat reflective coated glass.	
Refrigerator system	Self-contained, easily removable, top mounted condensing unit. Fitted with condensate evaporator, no drain connection required.	
Controller	Microprocessor controlled with digital thermometer display.	
Refrigerant	<ul style="list-style-type: none"> <li>Refrigerator ( R ) R134a</li> </ul>	<ul style="list-style-type: none"> <li>Freezer ( F ) R404a</li> </ul>
Shelves / GN pan	Complete with 3 pcs. PVC coated wire shelves per full door. Stainless steel angle slide, suit GN 2/1 pan size.	
Other features	Coved stainless steel floor pan. Heavy duty, adjustable, stainless steel bullet feet. Left hinge or right hinge selectable.	
Optional extra	<ul style="list-style-type: none"> <li>Stainless steel wire shelves</li> <li>Locking plate</li> </ul>	<ul style="list-style-type: none"> <li>Remote condensing unit</li> <li>Mullion heater for refrigerator</li> <li>Stainless steel base and back</li> <li>Cylinder locks</li> </ul>

### TECHNICAL DATA

	Refrigerated Models			Freezer Models		
Model number	AR-18	AR-40	AR-60	AF-18	AF-40	AF-60
Dimension L x D x H (cms)	68 x 81 x 200	132 x 81 x 200	197.5 x 81 x 200	68x 81 x 200	132 x 81 x 200	197.5 x 81 x 200
Capacity Cu. Ft./ Litres	18/530	40/1151	60/1695	18/530	40/1151	60/1695
Temperature range	2°C to 5°C			-18°C to -20°C		
Cooling capacity (Btu.)	1,910	2,729	4,435	2,388	5,203	7,923
Compressor	1/2	3/4	1	3/4	1-1/4	2-1/6
Shelves	3	6	9	3	6	9
Mullion heater (full/half doors)	Optional			62/82	124/164	186/246
Defrosting system	Circulated air			Electric		
Power supply	220 / 50 / 1 Ph.			220 / 50 / 1 Ph.		

**Note :** 60 Hz models are available.

Dealer :

Continued product improvement is **WELBILT** Manufacturing Ltd., policy. Specifications are subject to change without notice.



CAT-AR -0204-00